



For more information about The Homestead at Rochester or to schedule a tour, please call 507.535.2000 or visit [www.thehomesteadatrochester.org](http://www.thehomesteadatrochester.org).

### The Homestead at Rochester— A Senior Living and Care Community

The Homestead at Rochester is a community filled with possibilities. Here you'll find a rural ease and sensibility, combined with the convenience and inspiration of a thriving, vibrant neighborhood.

At The Homestead at Rochester, you can take comfort in knowing your needs can be met today, and tomorrow, through an exciting array of thoughtfully planned living choices and amenities.

#### Living and Care Choices

- Spacious, well-appointed independent living apartments
- Thoughtfully designed assisted living apartments
- Private, nurturing memory-support residences
- State-of-the-art care center offering short-term rehabilitation, long-term care and specialized memory support

At The Homestead at Rochester, your home includes more than your individual residence and extends well beyond your front door.

#### Community Attractions

- Café
- Market
- Fitness center
- Rehabilitation clinic
- Library, computer and fax
- Complimentary Wi-Fi
- Restaurant-style dining
- Beauty and barber shop
- Clubroom
- Card and billiard parlor
- Guest suite
- Chapel and community room
- Workshop
- Garden plots
- Walking trail

*The Homestead at Rochester is a smoke-free community.*



### THE GARDEN • ASSISTED LIVING

The Homestead at Rochester • A Senior Living and Care Community



**The Homestead at Rochester**  
**A Senior Living and Care Community**  
1900 Ballington Boulevard NW  
Rochester, MN 55901  
507.535.2000  
[www.thehomesteadatrochester.org](http://www.thehomesteadatrochester.org)

The Homestead at Rochester is a Volunteers of America community. Founded in 1896, Volunteers of America is a national, nonprofit, faith-based organization dedicated to helping those in need live healthy, safe and productive lives. Through hundreds of human service programs, including housing and health care, Volunteers of America touches the lives of more than 2 million people each year.



Volunteers  
of America®



## THE GARDEN

Assisted Living

With so many added conveniences at your doorstep, each new day is an adventure. Within your apartment home, relish the comfort, privacy and thoughtful details. As a member of The Garden community, join your neighbors for stimulating programs and events. All of this is yours to enjoy with the confidence that personalized care options are there to inspire you to live each day to the fullest.

### Select Home Details

- Bright, open floor plans
- Fully equipped kitchens with oak cabinetry
- Thoughtfully designed bathroom with elevated toilet, roll-in shower and grab bars
- Individually controlled heat and central air conditioning
- Blinds on all windows

### Added Conveniences

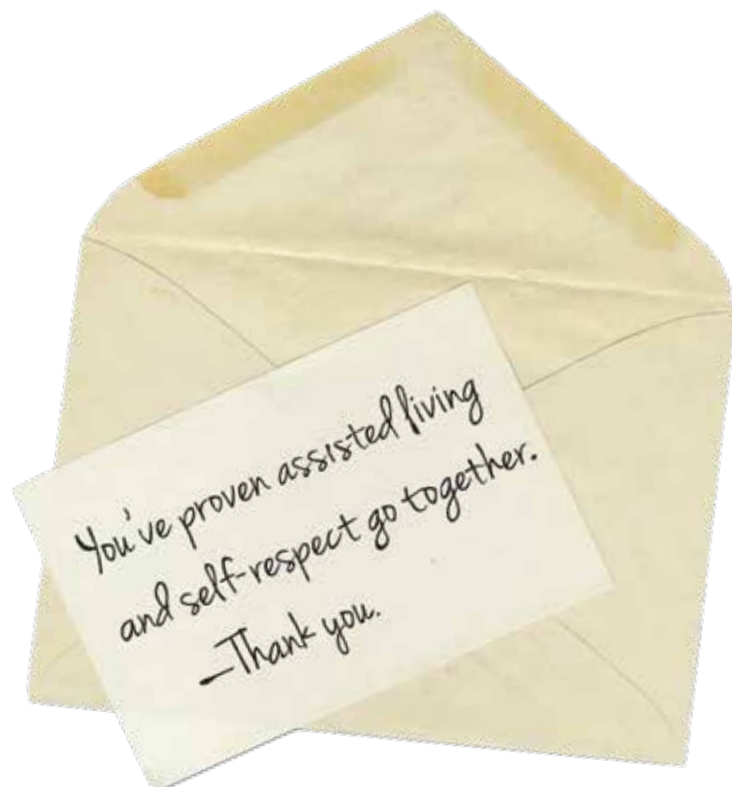
(Included in monthly fee)

- Secured-access entrance, monitored around the clock
- Breakfast and lunch or dinner
- Weekly housekeeping
- Life enrichment and educational programs
- Personal pendant urgent call system
- Complimentary Wi-Fi
- Scheduled transportation
- All utilities (heat, electric, central air conditioning, telephone, expanded cable television, water and trash)
- Lawn care and snow removal
- Apartment and building maintenance
- Priority access to other Homestead at Rochester living and care options based on availability
- Professional management by Volunteers of America
- Month-to-month residency agreement

### Extra Services

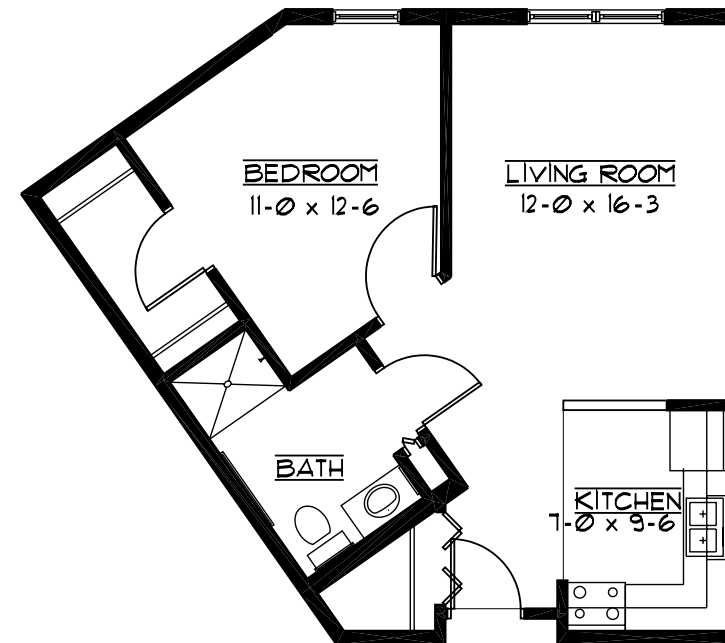
(Available for additional fee)

- Second occupant fee
- Access to personal care 24 hours a day through Volunteers of America Home Health at Rochester
- Specialized nursing and rehabilitation therapy visits
- Laundry and linen services
- Additional housekeeping
- Third meal option
- Guest meals
- Guest suite
- Beauty and barber services
- Heated underground parking and car-wash bay
- Storage



## APARTMENT

Floor Plans

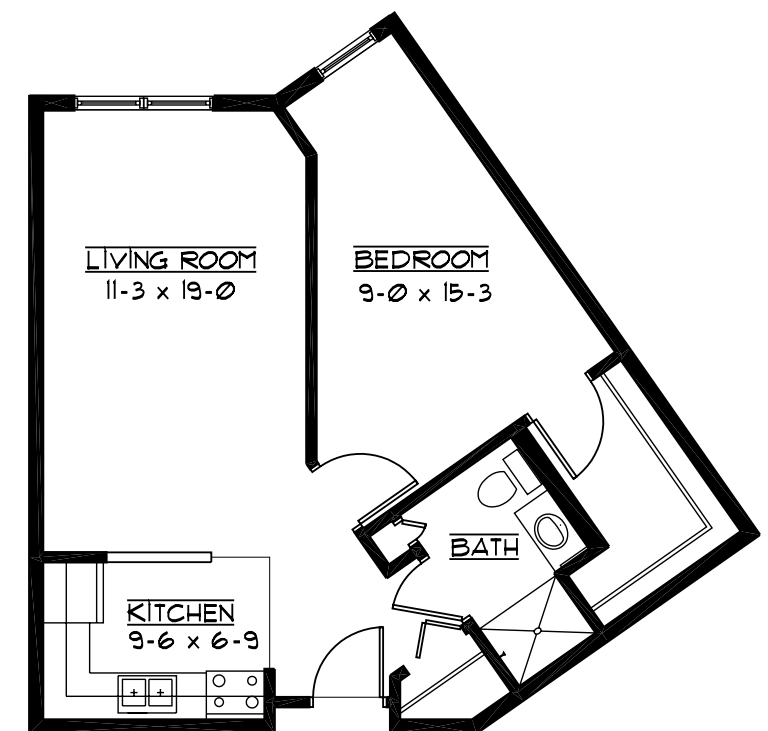


### Coneflower

642 sq. ft.  
1 bedroom

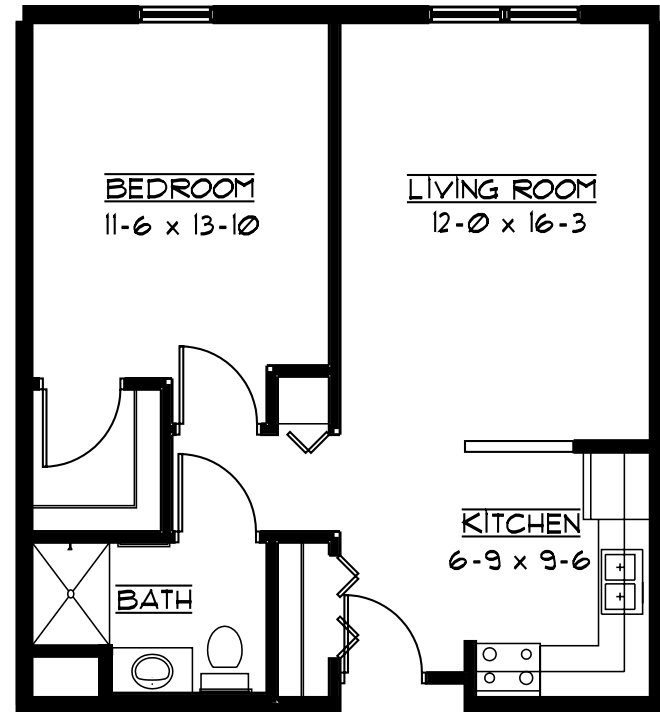
### Foxglove

660 sq. ft.  
1 bedroom



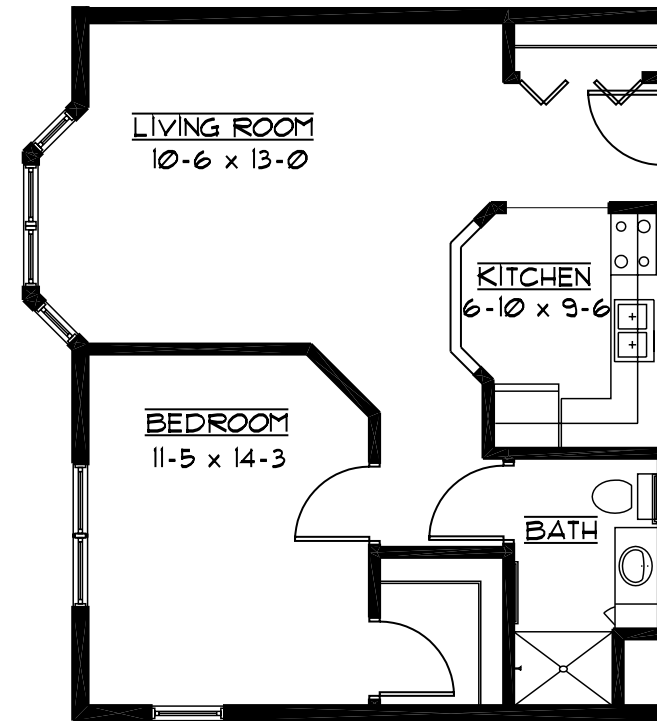
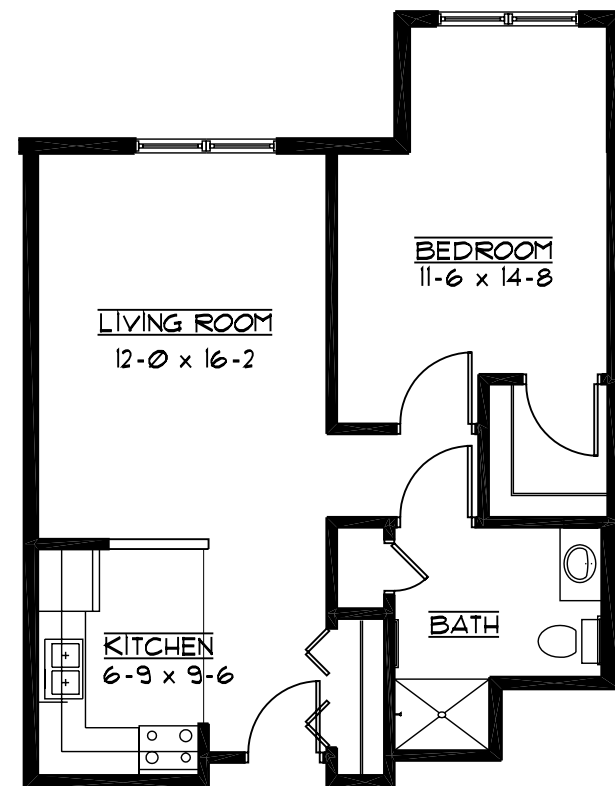
# APARTMENT

## Floor Plans

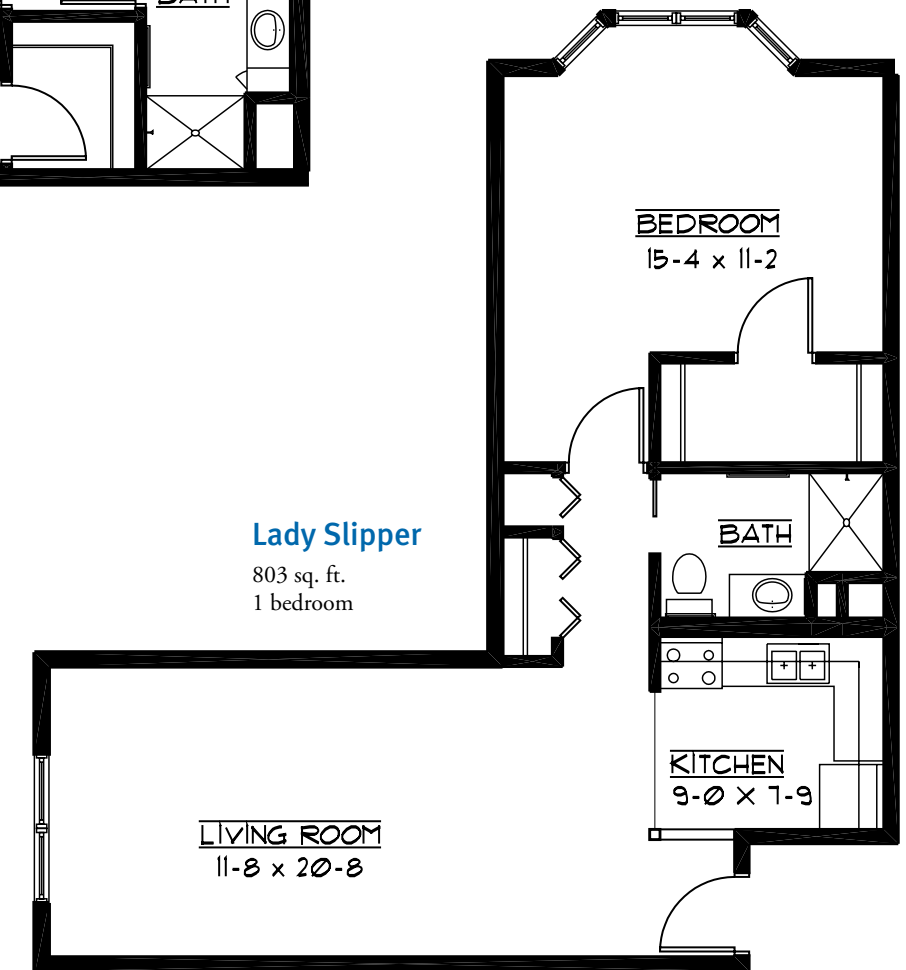


**Bluebead Lily**  
639-700 sq. ft.  
1 bedroom

**Hibiscus**  
680 sq. ft.  
1 bedroom



**King Rose**  
700 sq. ft.  
1 bedroom



**Lady Slipper**  
803 sq. ft.  
1 bedroom

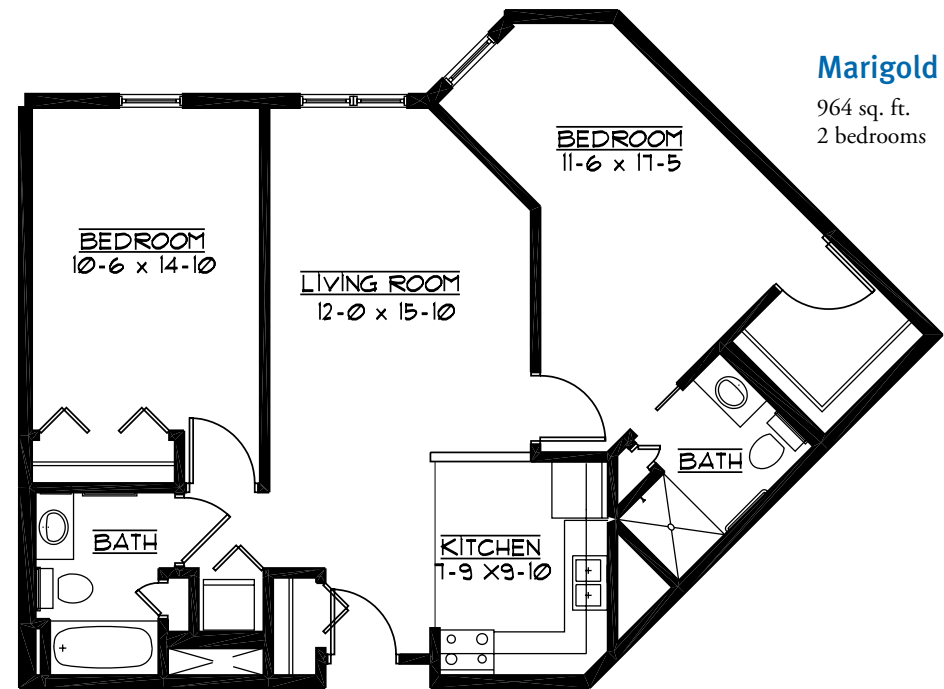
# APARTMENT

## Floor Plans

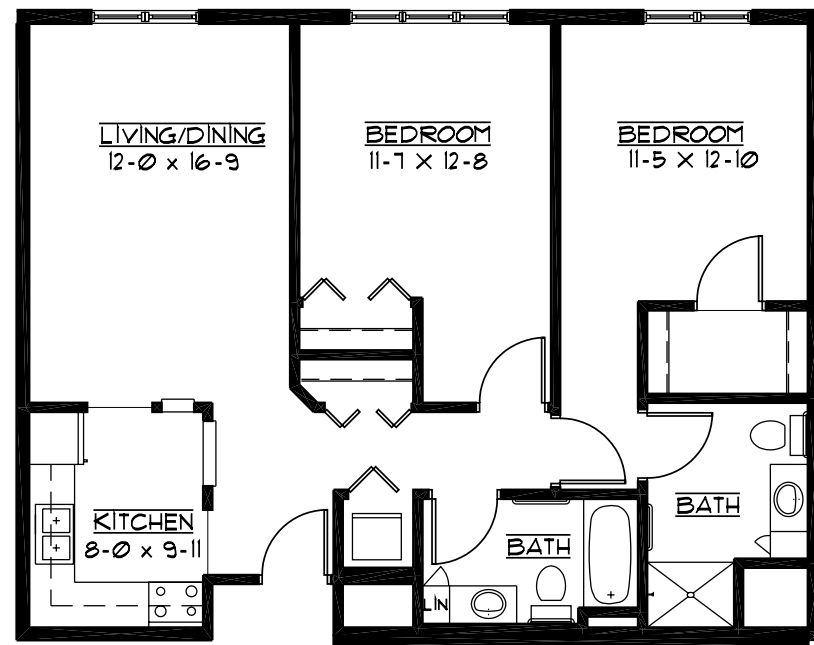


# APARTMENT

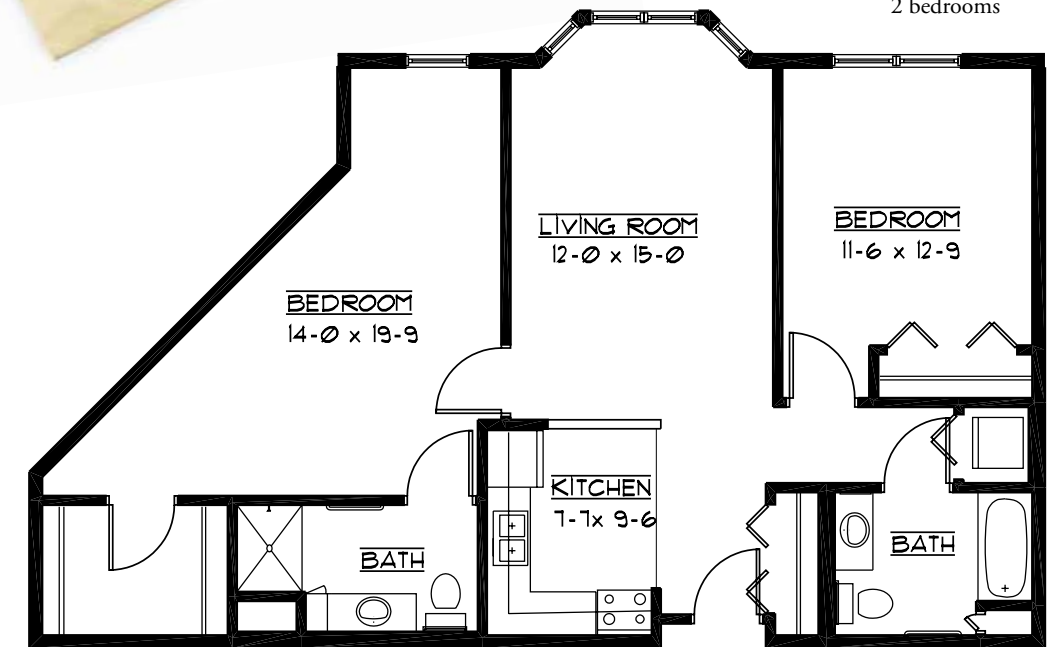
## Floor Plans



**Sunflower**  
1,030-1,034 sq. ft.  
2 bedrooms



**Trillium**  
1,082 sq. ft.  
2 bedrooms



# APARTMENT

## Floor Plans

Floor plans shown depict a small sampling of apartment styles; stated dimensions and square footage are approximate. Please ask about availability. Floor plans, features and amenities subject to change without notice.